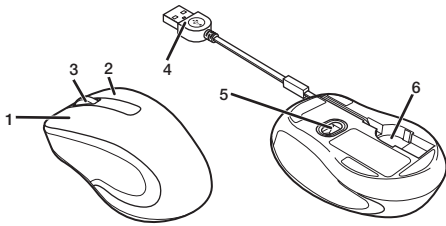


## Name and function of each part



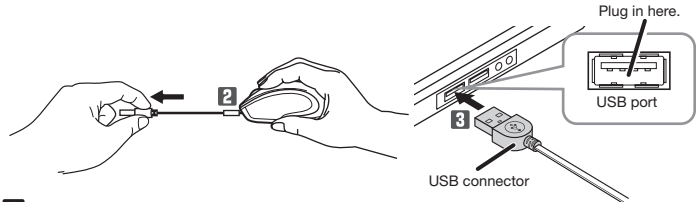
- 1 Left button**  
Left click on your PC.
- 2 Right button**  
Right click on your PC.
- 3 Wheel**  
Rotate forward and backward or click as a button to operate your PC.

- 4 USB connector (male)**  
Connect the USB connector to the USB port on a PC.

- 5 Optical sensor**  
Detects the mouse movements when you move the mouse.
- 6 Connector cable storage**  
Store the connector cable.

**When removing this product from your PC**  
This product supports hot plugging. The USB connector may be removed while the PC is in operation.

## How to use the mouse



### 1 Start the PC.

Start the PC, and then wait for it to be ready to perform operations.

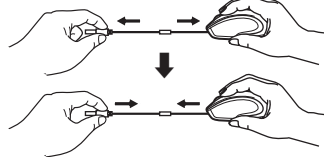
### 2 Pull out the connector cable as far out as you would like. Plug the connector cable into the USB port on your PC.

Any USB port may be used.

- Do not pull or bend the cable using excessive force. A fire or electric shock may result from broken wires.
- Be sure to sufficiently check the connector orientation and the insertion location.
- If you feel a strong resistance when inserting the USB connector, check that the shape and orientation of the connector is correct. Using excessive force may damage the connector and cause injury.
- Do not directly touch the terminal area of the USB connector.

### To retract the cable

#### 1 Hold the USB connector in one hand and the mouse in the other. Pull slightly (around 2/5 inch or 1 cm), then loosen.



- It is dangerous to let go of the USB connector as the cable retracts quickly. Please hold both the USB connector and the mouse when you retract the cable.

#### 2 Keep the USB connector in the connector cable storage.



## Specifications

Supported OS	Windows® 10, Windows® 8.1, Windows® RT8.1, Windows® 7, Windows® XP, macOS Sierra 10.12 (Updating the OS or installing a service pack may be necessary.) * Compatibility information was retrieved during operation confirmation in our verification environment. There is no guarantee of complete compatibility with all devices, OS versions, and applications.
Resolution	1600 dpi
Interface	USB
Read method	Optical sensor method
LED	Blue
Dimensions (W x D x H)	Approx. 54 x 86 x 36 (mm) Approx. 2.12 x 3.35 x 1.42 (inch) *Excluding cable
Cable length	Approx. 0.8 m/2.6 ft
Operational temperature/humidity	5°C to 40°C / up to 90%RH (without condensation) 41°F to 104°F / up to 90%RH (without condensation)
Storage temperature/humidity	-10°C to 60°C / up to 90%RH (without condensation) 14°F to 140°F / up to 90%RH (without condensation)

## Safety Precautions

- ⊘ Prohibited action
- Ⓜ Mandatory action
- ⚠ Situation that needs attention

English (EN)

### WARNING

- ⚠ If a foreign object (water, metal chips) enters this product, stop using immediately and remove it from your PC. If used as is, it may cause a fire or electric shock.
- ⚠ Stop using the product immediately and remove the product from the PC if abnormalities such as overheating, smoking, or odours occur. Please contact your dealer after that. If used as is, it may cause a fire or electric shock.
- ⊘ Please do not drop or hit this product. If this product is damaged, stop using immediately and remove it from your PC. Please contact your dealer after that. Fires or electric shocks may occur if this product is used when damaged.
- ⊘ Do not attempt to disassemble, modify or repair this product by yourself, as this may cause a fire, electric shock or product damage. Malfunctioning is not covered under warranty.
- ⊘ Do not put this product in fire, as the product may burst, resulting in a fire or injury.
- ⊘ Please do not insert or pull out the receiver unit with wet hands. In addition, do not modify or forcibly bend the product. It will cause a fire or electric shock.

### CAUTION

- ⊘ Do not place this product in any of the following environments:
  - In a car exposed to sunlight, a place exposed to direct sunlight, or a place that becomes hot
  - In a moist place or a place where condensation may occur
  - In an uneven place or a place exposed to vibration
  - In a place where a magnetic field is generated (such as near a magnet)
  - In a dusty place
- ⚠ This product does not have a waterproof structure. Use and store this product in a place where the product body will not be splashed with water or other liquid. Rain, water mist, juice, coffee, steam or sweat may also cause product damage.
- ⊘ Only use this product with PCs and video game systems.
- ⊘ Do not use this product with any device that may significantly be affected in the case of this product malfunctioning.
- ⊘ If this product is used on a transparent surface such as glass or a highly reflective surface such as a mirror, the optical sensor will not function correctly and the product's cursor movement will become unstable.
- ⊘ If this mouse isn't going to be used for one month or longer, remove the mouse from the PC.
- ⊘ Please note that looking directly into the sensor light may hurt your eyes.
- ⊘ When you no longer need to use this product, be sure to dispose of it in accordance with the local ordinances and laws of your area.

### Cleaning the mouse

If the product body becomes dirty, wipe it with a soft, dry cloth.

- ⊘ Use of a volatile liquid (paint thinner, benzene, alcohol, etc.) may affect the material quality and color of the product.

### Limitation of Liability

- In no event will ELECOM Co., Ltd be liable for any lost profits or special, consequential, indirect, punitive damages arising out of the use of this product.
- ELECOM Co., Ltd will have no liability for any loss of data, damages, or any other problems that may occur to any devices connected to this product.

### Compliance status [www.elecom.co.jp/global/certification/](http://www.elecom.co.jp/global/certification/)

**FC** This device complies with Part 15 of the FCC Rules. Operation is subject to the following two conditions: (1) this device may not cause harmful interference, and (2) this device must accept any interference received, including interference that may cause undesired operation.

In order to make improvements to this product, the design and specifications are subject to change without prior notice.

## ELECOM CO., LTD.

[www.elecom.co.jp/global/](http://www.elecom.co.jp/global/)

ELECOM Korea Co., Ltd. Dome-Bldg 5F, 60, Nambusunhwan-ro 347-gil, Seocho-gu, Seoul, 06730, South Korea TEL : +82 (0) 2 - 1588 - 9514 FAX : +82 (0) 2 - 3472 - 5533 <a href="http://www.elecom.co.kr">www.elecom.co.kr</a>	ELECOM Sales Hong Kong Ltd. 2/F, Block A, 2-8 Watson Road, Causeway Bay, Hong Kong TEL : +852 2806 - 3600 FAX : +852 2806 - 3300 email : <a href="mailto:info@elecom.asia">info@elecom.asia</a>
ELECOM (SHANGHAI) TRADING Co., Ltd Room 208-A21, 2nd floor, 1602 Zhongshanxi Road, Xuhui District, Shanghai, China, 200235 TEL : +86 021-33680011 FAX : +86 755 83698064	ELECOM Singapore Pte. Ltd Blk 10, Kaki Bukit Avenue 1, #02-04 Kaki Bukit Industrial Estate, Singapore 417942 TEL : +65 6347 - 7747 FAX : +65 6753 - 1791

- Unauthorised copying and/or reproducing of all or part of this manual is prohibited.
- The specifications and appearance of this product may be changed without prior notice for product improvement purposes.
- When exporting this product, check the export regulations for the country of origin.
- Windows is either registered trademark or a trademark of Microsoft Corporation in the United States and/or other countries.
- Macintosh and macOS Sierra are trademarks of Apple Inc., registered in the U.S. and other countries.
- Company names, product names, and other names in this manual are either trademarks or registered trademarks.

A customer who purchases outside Japan should contact the local retailer in the country of purchase for enquiries. In "ELECOM CO., LTD. (Japan)", no customer support is available for enquiries about purchases or usage in/from any countries other than Japan. Also, no foreign language other than Japanese is available. Replacements will be made under stipulation of the Elecom warranty, but are not available from outside of Japan.

Wired Mouse  
Manual, Safety precautions, and Compliance with regulations  
1st edition, October 7, 2021

**ELECOM**

©2021 ELECOM Co., Ltd. All Rights Reserved.